



"Be The Best You Can Be"

Weekly Newsletter

2025/26

Issue Number: 17

Date: 23/01/26





Eleisha Skinner

Celebration of life

Head Student 2022-23

We remember and celebrate the life of a truly remarkable young woman whose presence at the Abbey School leaves a lasting mark on our community and in the hearts of all who had the privilege to know her.

From the moment Eleisha joined us as a Year 7 student in 2016, she embodied determination, dedication and kindness. Over seven years, she embraced every opportunity with enthusiasm and purpose, growing not only as a student but as a leader, role model, and friend.

Her academic journey reflected her strong work ethic and constant curiosity, reflected most fittingly in sixth form as she studied Health & Social Care, Child Development, English Literature, and Psychology - subjects that mirrored her deep desire to support, understand, and uplift others. As Head Student, Eleisha was a genuine changemaker. She led with warmth, fairness, and a maturity beyond her years. Fondly remembered for her ability to bring people together, it was often said with a smile that she not only led the sixth form students, but probably the sixth form staff too. Her leadership was rooted in kindness, encouragement, and a deep sense of responsibility for those around her.

Eleisha was endlessly generous with her time; not only leading at large school events but also as a peer mentor and role model to younger students, always being ready to listen, guide, and encourage. Eleisha's kindness extended far beyond the classroom, whether supporting her friends or giving back to her local community as Miss Faversham, a role she embraced with grace and enthusiasm.

Family-focused, loyal, and aspirational, Eleisha held her loved ones close and carried a strong sense of purpose in all that she did. Her compassionate nature made her destined for a future in social work, a path that reflected her determination to make a positive difference in the lives of others.

In the final year of her university studies, Eleisha was a happy, determined, and driven young woman, full of promise and purpose. Her passing has been felt deeply across our school community, where she is fondly remembered and greatly missed by staff and students alike. We hold close the many happy memories of Eleisha's laughter, leadership, and light. Her legacy lives on in the lives she touched, the example she set, and the warmth she brought into every space she entered.

Eleisha will always remain a cherished part of the Abbey family.



Eleisha was an exceptional young person whose contribution to The Abbey School community was profound and lasting. As a Head Student, she embodied the very best of our values: she led with integrity, gave her time generously, and was deeply committed to supporting others. She was thoughtful, compassionate, and quietly determined, and she made a genuine difference to the life of the school. I remember Eleisha speaking with real clarity and passion about her ambition to become a social worker - not as an abstract idea, but as a vocation rooted in care, justice and service. That sense of purpose stayed with her, and it was evident in the way she carried herself and the way she treated people.

Eleisha will be remembered with great affection and pride by staff and students alike. Her legacy is one of kindness, leadership and contribution, and she will always remain a valued part of the Abbey story.

Principal

In 2019, I had the privilege of being part of a group of Abbey School students and staff who visited the island of Réunion. Eleisha, who was in Year 9 at the time, was also part of this group. She played an important role during the trip, and it was her confidence and warm, outgoing nature that helped to bridge the language and cultural differences between the Abbey students and the students from Réunion.

Eleisha showed genuine leadership throughout the visit, always ensuring that everyone felt included in activities, regardless of whether they were part of her immediate friendship group. She was a joy to spend time with on the trip, and she made a lasting impression on all who knew her. She will be greatly missed.

Head of Media

Eleisha was an absolute joy to teach in PE and someone we will always remember with great fondness. She had a truly beautiful personality and was so kind, caring and thoughtful towards everyone around her. Eleisha was a genuine pleasure to teach and approached every lesson with positivity and enthusiasm (even when we did badminton or bench-ball for the whole term), she was always considerate of others and never without her cheeky smile. I will always remember her big glasses and the gentle, lovely nature she brought with her wherever she went. As well as her humour, Eleisha's kindness sticks in my memory, particularly the wonderful way that she used to support her sister when she first joined the school. She always came across as a great friend to her peers, and had an infectious laugh. She was a wonderful student, and the school was made much richer by her contributions to school life.

PE Department

Eleisha was a model student in English. conscientious, hard-working, and most of all resilient with a determination to succeed even when things were challenging. Eleisha's strength and a willingness to succeed is who she was, and she was an inspiration to her fellow peers. Eleisha also stood out with her radiance and magnetic personality.

There are so many memorable moments to recall from working with Eleisha, from bright blazer day to the cake sales, the endless jokes, practising her Head girl speeches, and her constant support to promote English in the sixth form to her peers - she was forever giving her time to her younger peers in the school mentoring, supporting, and inspiring them to succeed. Eleisha's willingness to give was boundless - we are privileged to have known her, taught her, and to have her as a student in English.

Head of English

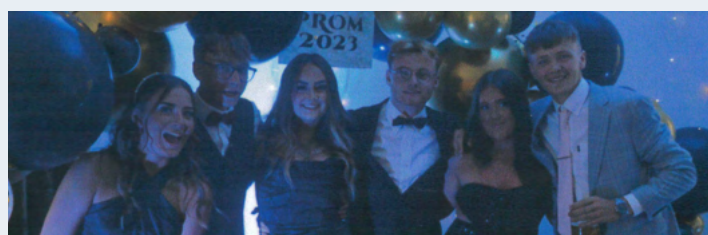
From the moment I met Eleisha, she was clear about her ambition to become a social worker. She chose Health and Social Care and Child Development with this goal in mind and never wavered in her determination. When Health and Social Care did not run in sixth form, Eleisha showed remarkable resilience, continuing with Child Development and independently studying Health and Social Care content in her private study time. Her commitment and determination were admirable.

Eleisha was thrilled to secure a place at university to study Social Work. Her compassion, sense of purpose, and desire to advocate for others would have made her an outstanding social worker.

Head of Health and Social Care

We remember Eleisha as a confident and fearless young woman with a kind heart who worked really hard for herself and sixth form during Yr12 and 13. She had a vivacious personality and was full of confidence and ambition for life. We remember joining her and some other 6th form students on a sponsored walk during her last summer at the school and it was a fun afternoon walking in the sun and talking about life and hopes for the future. We cannot find words to express the sadness of her loss and our thoughts and prayers are with her family and friends. She is remembered in Sixth Form for the smile that glowed and infected everyone, the minute Eleisha stepped in to the office. A charismatic, strong, amazing person who will be greatly missed by all of those who knew her.

Sixth Form Team



STARS OF THE WEEK

Well done to the following students for collecting the most house points this week!
KEEP UP THE AMAZING WORK!



Janet Z
Year 7
35HP



Frederick B
Year 8
43HP



Charlie B
Year 8
37HP



Devon B
Year 10
57HP

#WAKE UP WEDNESDAY

SENECA CHAMPIONS

At The National College, our WakeUpWednesday guides empower and equip parents, carers and educators with the confidence and practical skills to be able to have informed and age-appropriate conversations with children about online safety, mental health and wellbeing, and climate change. Formally delivered by National Centre for Safety, these guides now address wider topics and themes. For further guides, hints and tips, please visit nationalcollege.com.

What Parents & Educators Need to Know about ROBLOX

Roblox is an online platform where users can play and create games known as 'experiences' made by other users. Roblox has a large UK audience. TV News has reported that millions of people in Britain use the platform regularly, with children forming a significant proportion of its users. The sheer scale of it makes it extremely difficult to moderate effectively, creating risks for unsupervised children.

WHAT ARE THE RISKS?

A PLATFORM RATHER THAN A GAME
Roblox differs from traditional video games in that it hosts millions of user-created experiences rather than a fixed set of developer-produced content. Each experience is performed by its creator and is not independently signposted in Roblox, so in the case with PEGI-rated games, with warnings of user-generated experiences, moderation is largely automated which means that inappropriate content may reach younger players and have a harmful effect.

RISK OF ADDICTION
Roblox encourages repeated and sustained play. Many experiences are made at short intervals, with daily and progression systems that can prompt users to keep playing for longer periods of time. Some games also use reminders, daily rewards, or timed events to encourage frequent login. These design elements make it difficult to stop playing. Spending long periods online may cause sleep, homework, or other activities if boundaries are not in place.

COMMUNICATION WITH OTHER USERS
Roblox includes text and voice features that allow players to chat if shared games. While the platform uses automated filters and moderation tools, creative improvisation can find that inappropriate and potentially harmful messages can slip through. There are risks that children could be targeted by scammers or impostors. Roblox has responded to these risks with changes to the platform, such as a one-facial age-restriction for players to prevent chat access between adults and children they do not know.

Advice for Parents & Educators

USE PARENTAL CONTROLS
Roblox's parental controls provide an important starting point. Linking a child's account to an adult account allows parents to apply spending controls, limit communication features, and review recent activity. Regular engagement, use of parental controls, and conversations with children about what they see online can help reduce the risk of exposure to inappropriate content.

PLAY TOGETHER WHERE POSSIBLE
Playing Roblox with a child can help adults understand the types of experiences available, how moderation works, and how children interact online. This shared engagement can also make it easier for children to raise concerns if something feels wrong. Parents and educators should monitor all games played on Roblox due to its self-rating nature.

ENCOURAGE OPEN CONVERSATIONS
Many Roblox experiences are creative and age-appropriate, and for many children, the platform is an important way to connect with friends, share their talents, and learn. Parents and educators should talk openly with children about online safety, spending, and how to respond to inappropriate behavior.

Meet Our Expert
Alan Morris is a technology journalist who has written for publications including The Independent, The Telegraph, The Evening Standard, The Guardian and The New Statesman.

See full reference for other guides.

Follow us on social media: [@wake_up_weds](https://www.wake_up_weds), www.thenationalcollege, [@wakeupwednesday](https://www.wakeupwednesday), [@wakeupwednesday](https://www.wakeupwednesday)

Users of this guide do so at their own discretion. No liability is entered into. Current as of the date of release: 21.01.2025

Year Group	Learning Time	Average Score	Time Champion	Score Champion
12&13	4h 29min	90%	Oliver S	James T
11	70h 32min	66%	Reuben M	Josh B
10	47h 38min	64%	Lucy M	Leighton G
9	48h 35min	69%	Lily-May H	Marci M
8	14h 49min	66%	Mitchell J	Eadie W
7	10h 7min	66%	Abiola O	Ikmat M

CANTEEN MENU 2025/26

Click the images below to view the canteen menu for Term 3!

IN CASE YOU MISSED IT,
CLICK HERE TO SEE OUR PREVIOUS
NEWSLETTER!



STUDENT SHOUTOUT!

We love celebrating our amazing students and their achievements! Parents and carers, we'd love to hear from you! If your child has achieved something they're proud of (big or small!), send it in and we will share this with our school community.

Achievements could include:

- Academic successes
- Sporting achievements
- Creative talents
- Personal milestones
- Acts of kindness or resilience

To take part, simply email us with:

Your child's achievement
Their name
A photo (optional)

info@abbey-school-faversham.co.uk

Let's work together to celebrate our students and recognise their hard work!

#BeTheBestYouCanBe

CRAFT CLUB

In gardening and craft club this term we have been looking forward to Easter. Some students made these really cute Easter chicks.

Next week we are starting a gardening and plant project and checking up on our trees. Anyone is welcome: Tuesdays 3:30-4:30 in C11.



YEAR 10 AND 11 UP LIFT MORNING

Well done to all students who took part in a Up Lift morning on Wednesday. It was a great morning for everyone involved!

Keep up the great work everyone.



FAVERSHAM GEM AWARDS

We're nominating our students for the Faversham GEMs Awards 2026!

We are proud to be putting forward some of our incredible young people for the Faversham GEMs Awards - celebrating children and young people who truly go the extra mile to make life sparkle for others.

These awards recognise kindness, community spirit, and the small actions that make a big difference. Nominations are open until the end of February, and anyone can nominate - including peers!

Take a look and consider who your GEM might be:

www.favershamgems.org

YOUNG COOKS

Young Cooks Competition 2026

Ready to ignite your passion for cooking and uncover the chef within you? Young people from all year groups are invited to take part in our Young Cooks Cookery Competition 2026, where talent, creativity, and flavour take centre stage.

Winners will receive a share of £600, and one finalist will be selected to cook at an exclusive Showcase Lunch at The Dog in Wingham. There may also be the opportunity to attend a master class with an award-winning chef.

We are happy to support students throughout the application process, so please don't hesitate to get involved.

To find out more, visit: <https://sekgroup.org.uk/support/sek-schools/young-cooks-competition/>

ENRICHMENT & PERSONAL DEVELOPMENT NOTICE!

To honour Holocaust Memorial Day, all students will take part in an enrichment presentation on Monday 26th January, delivered by Peter Kammerling from Generation2Generation.

The session forms part of our Personal Development curriculum and includes sensitive historical testimony, delivered in an age-appropriate and supported way.

More information: <https://www.generation2generation.org.uk/holocaust-survivor-walter-and-herta-kammerling/>

For questions, please contact alebrunn-healey@abbeyschoolfaversham.co.uk.



CALLING ALL POTENTIAL COMMUNITY OFFICERS

DO YOU WANT TO MAKE A DIFFERENCE TO YOUR SCHOOL? DO YOU
HAVE SOME GREAT IDEAS ABOUT HOW TO BRING POSITIVE CHANGE?
THEN APPLY NOW – WE WANT YOU

Due to the retirement of some of our year 11 house officers, we are
going to have a few spaces on the house council team.

This is a team that does the following activities:

- Organises community events in the school, such as charity days
- Meets with Mrs LeBrunn-Healey and Mrs Lucas re positive change
- Gets involved in projects, such as Onion space and the White ribbon campaign
- Supports the school in fund-raising
- Collects and distributes documents and golden tickets
- Feedback to year groups in assemblies
- Helps organise trips and events, such as to Swale Council chambers
- Eco-projects – tree-planting and litter-picking

If you are interested in applying, you must do the following:

- 1) Let Dr Moseley know by Friday 30th January
- 2) Write a speech of no more than 2 minutes on the topic of: "One community project that I would like to propose and help run for the Abbey school is..."

You will have 2 minutes to stand up in all house assemblies in week 6 of this term and
give your speech to all year groups. Your speech will be judged on the following criteria:

- How well you outline your idea – is it clear how it would work?
- Why this idea is important and how it links to the community
- How well you present it – are you clear and concise?
- How can you get the school on board?

Successful candidates will then be informed and be in position for term 4. I will also be sending the list of
potential candidates to your tutors and heads of year, so they can keep me informed of anything brilliant
you do for the school/community before week 6 of this term. If you have any questions either email or see
Dr Moseley - amoseley@abbeyschoolfaversham.co.uk

100% Attendance = Big Rewards

3x Brand new 32" TV's to be won!

From Monday 12th January,
every lesson counts! Students with
100% attendance until the end of
term will be entered into an
exclusive prize draw.

One TV will be won per key stage!

Turn Up. Stay In. Tune Into a New TV!

*Students who have on going medical conditions which require appointments
or Year 11 students who are attending post 16 interviews will still eligible

 **The Abbey
School**

Celebrate those working in education across Kent and Medway

To nominate, simply tell us what makes the
person/team within your school community stand out
from the rest!

Nominations are open to parents, students, and peers, if you know
someone who deserves recognition, we encourage you to submit a
nomination.

Vote here:

<https://bit.ly/THATKEA>

SCAN ME



With a wide range of award
categories, including *primary*,
secondary, *early careers*, *non-
teaching members of staff*, and
volunteers, there's an opportunity
to recognise everyone who makes
a difference in our schools and in
our children's lives.

NOMINATIONS CLOSE

31st January 2026

DOVER ATHLETIC FOOTBALL ACADEMY

IN PARTNERSHIP WITH THE ABBEY SCHOOL SIXTH FORM

FOOTBALL ACADEMY TRIALS

TUESDAY 17TH FEBRUARY 2026

IF YOU ARE INTERESTED IN ATTENDING THE TRIAL OR WANT TO FIND OUT MORE INFORMATION, PLEASE SCAN THE QR CODE BELOW AND FILL OUT THE FORM.



- Excellent coaching from UEFA A Licence Coaches
- Full time training whilst studying a full range of A Level or BTEC Courses
- Full Fixture Schedule played on Wednesday afternoons
- Represent Dover Athletic Football Club
- Play in the FA Youth Cup
- Compete in International Tournaments
- Excellent progression routes

If you have any questions, please contact Academy Manager Mike Sandmann
msandmann@abbeyschoolfaversham.co.uk



The Abbey
School



LATEST RESULTS!

Below are the results from Wednesday 21st January!



DOVER ATHLETIC 'WHITES'

2

● Abraham
● Leberl



RAMSGATE

4



WELLING UNITED

0



DOVER ATHLETIC 'BLUES'

0



POETRY LIVE REMINDER!

Last chance to buy poetry live tickets for 12th February 2026.

TICKETS ON ARBOR UNTIL TUESDAY 27th JANUARY!



Consideration In The Community

Most of you are wonderful ambassadors of the school through your kind and considerate actions towards others in our local community, especially when travelling to and from school.

Remember it is **not fair** for anyone to be allowed to deliberately make life miserable for others. **We will never tolerate nasty behaviour, thoughtless actions or bullying towards those in our school or in the local community.** In school always ask an adult for help if you are being treated unkindly or if you feel frustrated about the way others are treating you. In the community we need to show we are caring and considerate towards those who live and work near the school, so everyone feels safe and happy when they meet Abbey students.

DO

Move aside on the pavement to allow to use it.

Speak using appropriate tone and at a sensible level to those you are with, using language that is not offensive or swearing.

Cross roads safely, using the bridge to navigate the A3 and by looking up and checking the traffic for all other streets where there are no pedestrian crossing facilities

Respect residents' property by walking on the pavements, keeping away from cars, bin, doors and driveways. Be polite to those who live near our school.

DO NOT

Monopolise the whole pavement space by walking in a group forcing elderly, those with prams or indeed anyone from the community into the road.

Shriek, shout, threaten or swear to those around you, be they friends, members of the public or students who attend other schools - this is intimidating behaviour brings our school into disrepute and this will be followed up and dealt with.

Run across the A3, this is a busy road with TWO speed cameras on it for a reason - the number of accidents. **DO NOT** become a statistic (injured or worse). Do not walk out directly in front of cars and expect them to stop.

Trespass onto people's property or cause damage to their property, if this happens residents should report this to the police, and we will always help the police identify who has caused the problem so they can take the action they need to (this could include prosecution for criminal damage or harassment etc).



Writing your UCAS personal statement



UCAS: Personal statement guidance

1

Why do you want to study this course or subject?

- Refer to the **specifics of the course or subject** to explain what motivates you
- **Give examples** of how your interest has developed (role models, lectures, books/authors, podcasts, super-curricular activities) & what have you learnt that you find interesting
- Consider how the course/subject **links to your career plans**

2

How have your qualifications & studies helped you to prepare for this course or subject?

- Discuss relevant subjects you are studying & the topics that have motivated you to study them at uni, & why
- Note the **skills** you have which make you suitable for university study; give examples to prove you have them
- Describe your **academic achievements**, & why they are relevant to higher education study

3

What else have you done to prepare outside of education, & why are these experiences useful?

- Work experience, volunteering, hobbies, or extra- or super-curricular activities can give you **relevant knowledge** or show your **genuine interest** in a subject or topic
- They can also demonstrate work & study **skills**
- Use **specific examples** to demonstrate them, & reflect on why you're including it

log in to learn more at www.morrisby.com



EXTRA CURRICULAR PROGRAMME

TERM 3

This term, our extracurricular programme is full of exciting opportunities, with something to suit everyone's interests. There are sports, creative clubs and new activities to try out. Joining in is not just about fun, it's also a chance to discover new talents, meet different people, and grow in confidence.

Trying new things is especially valuable because it helps you step outside your comfort zone. You may uncover hidden skills you didn't know you had, or find a passion that could shape your future. It also teaches resilience, problem-solving, and teamwork skills that are useful both in and out of school.

Most importantly, extracurricular activities bring balance to your life. They give you a break from classroom learning while still helping you develop in meaningful ways. Whether you continue with something familiar or try something completely new, you'll gain experiences and memories that will last well beyond this term.

Click the image below to see what is happening this term!



YOU SAID WE DID!

We have worked with you
listened to your ideas and made lots of changes
over the last few years.

You asked.....

"Why do C1 and C2 result in negative points if they are corrections?"

We did.....

"This was a totally valid point; corrections are the opportunity to change and get things right so shouldn't have negative points attached. We have taken away any negative points for C1 and C2."



 **The Abbey
School**



Work Experience Programme for Year 10 Students 2026

We are pleased to announce that our Work Experience Programme for Year 10 students, taking place from Monday 29th June to Friday 4th July 2026. This compulsory, week-long placement gives students the opportunity to step away from their usual school timetable and gain invaluable first-hand experience in the world of work.

To introduce the programme, we will be holding an assembly for all Year 10 students, where they will receive clear guidance on how to source, apply for, and follow up on work placements. This session will also offer practical advice on approaching employers and making the most of this experience.

Why Work Experience Matters

At this important stage of their education, work experience plays a vital role in helping students:

- Explore potential career paths and industries of interest
- Build independence and confidence through real-world experience
- Enhance CVs and future applications for sixth form, college, apprenticeships, or university
- Develop transferable skills, such as communication, teamwork, and problem-solving

Students are expected to arrange their own placement, ideally in a field that interests them. This process not only gives students a sense of ownership over their future, but also helps them develop essential skills for future job searches and applications.

Supporting Your Child

We ask for your support in encouraging your child to actively pursue a placement that aligns with their interests or future aspirations. Whether it's in healthcare, business, the arts, engineering, education, or another field, every experience will help broaden their understanding of the working world.

Students will be guided through the process in school, and I will be available to offer support and advice as needed.

This is a fantastic opportunity for our students to gain meaningful insight into the world beyond school, and we look forward to seeing the positive impact it will have on their confidence, motivation, and future goals.

Mrs Priestley
Careers Support Co-ordinator

SUPPORTING EXAM STRESS AND WELLBEING

As part of the Personal Development programme, our Year 11, 12 and 13 students have been provided with helpful resources from Kooth, an award-winning online mental health and wellbeing platform.

Kooth offers free, safe and anonymous support for young people, including:

- One-to-one chats with qualified counsellors,
- Helpful articles and wellbeing activities,
- Peer support through moderated discussion boards, and
- Tools to track mood and set personal goals.

With mock exams approaching next week, we know many students may be feeling more anxious. These resources are designed to help them manage stress, build resilience and maintain balance during the exam period.

How you can support at home:

- Encourage regular breaks, rest, and healthy routines.
- Listen without judgement — sometimes talking helps most.
- Remind them that effort and progress matter more than perfection.
- Visit www.kooth.com together to explore the support available.

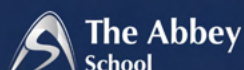
We're incredibly proud of our students' dedication and will continue to provide both academic and emotional support throughout the exam season.

THE WORRY BOX

Checked daily during school hours

www.theabbey-that.org.uk/worrybox

Not checked at the weekends or evenings. For urgent help, contact NSPCC, Action for Children or Childline





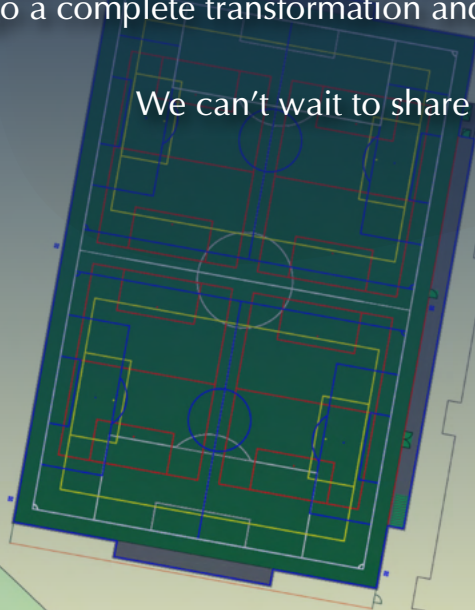
NEW 3G PITCH APPROVED!

We were thrilled to get planning permission from Swale Council on 15th January 2026 for a second 3G pitch on our site! The total value of the development includes significant funding from the Football Foundation, Kent County Council and Swale Borough Council as well as a contribution from the school.

This additional 3G pitch will allow for a great amount of outdoor PE for our pupils all year round, and will provide a fantastic community asset, with a wide range of users signed up for weekly slots including: Faversham Strike Force FC, London Lionesses, Kent Disability, Faversham Rugby and many other groups from our community.

As well as a brand new state-of-the-art 11-a-side 3G pitch, our 3 changing rooms will undergo a complete transformation and we will be installing an 80 space car park, with EV charges.

We can't wait to share further plans in the coming months!





HIRE OUR FACILITIES

CLICK THE QR CODE TO BOOK NOW!



NO EXCUSE FOR ABUSE



At The Abbey School, we strive to create a **safe and secure** environment for the school community. Our school is a **welcoming and inclusive place** where we all show one another respect and look out for each other.

We will not tolerate any **threatening, abusive or violent** behaviour and action will be taken when necessary.



Secondary School of the Year

Recognising the exemplary use of STEER to proactively safeguard children and young people, and your role in supporting proactive safeguarding across your sector.

2025

A handwritten signature in black ink.

Simon Walker
STEER Founder



**The Abbey
School**

A handwritten signature in black ink.

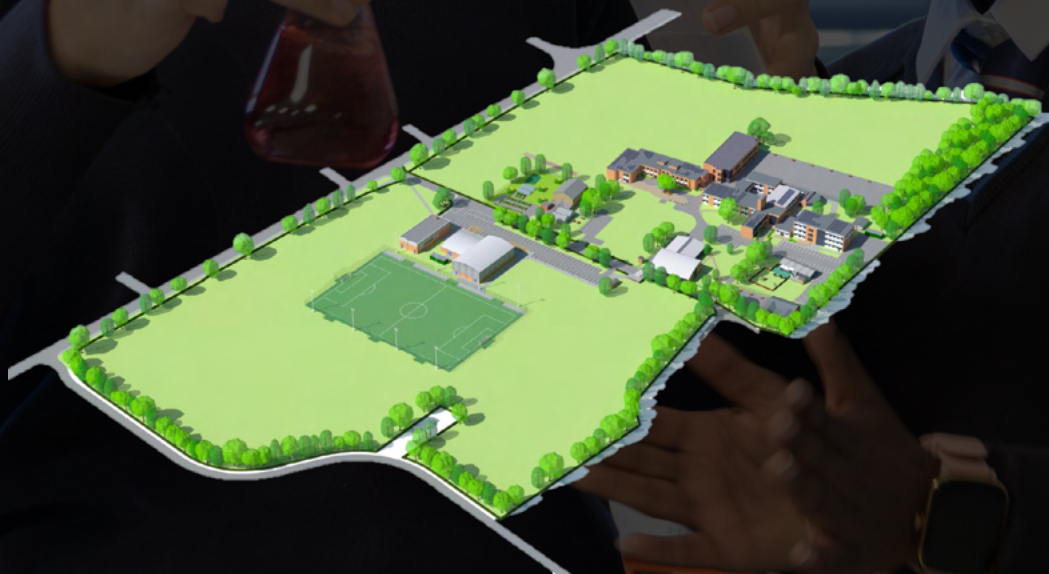
Jo Walker
STEER Founder





The Abbey School
Faversham
Kent
ME14 8RZ

www.theabbey-that.org.uk
info@abbeyschoolfaversham.co.uk
01795 532633



Attendance Office
01795 542477
attendance@abbeyschoolfaversham.co.uk



The Abbey
School